

A PART OF THE BAY WINDS PLANNED UNIT DEVELOPMENT

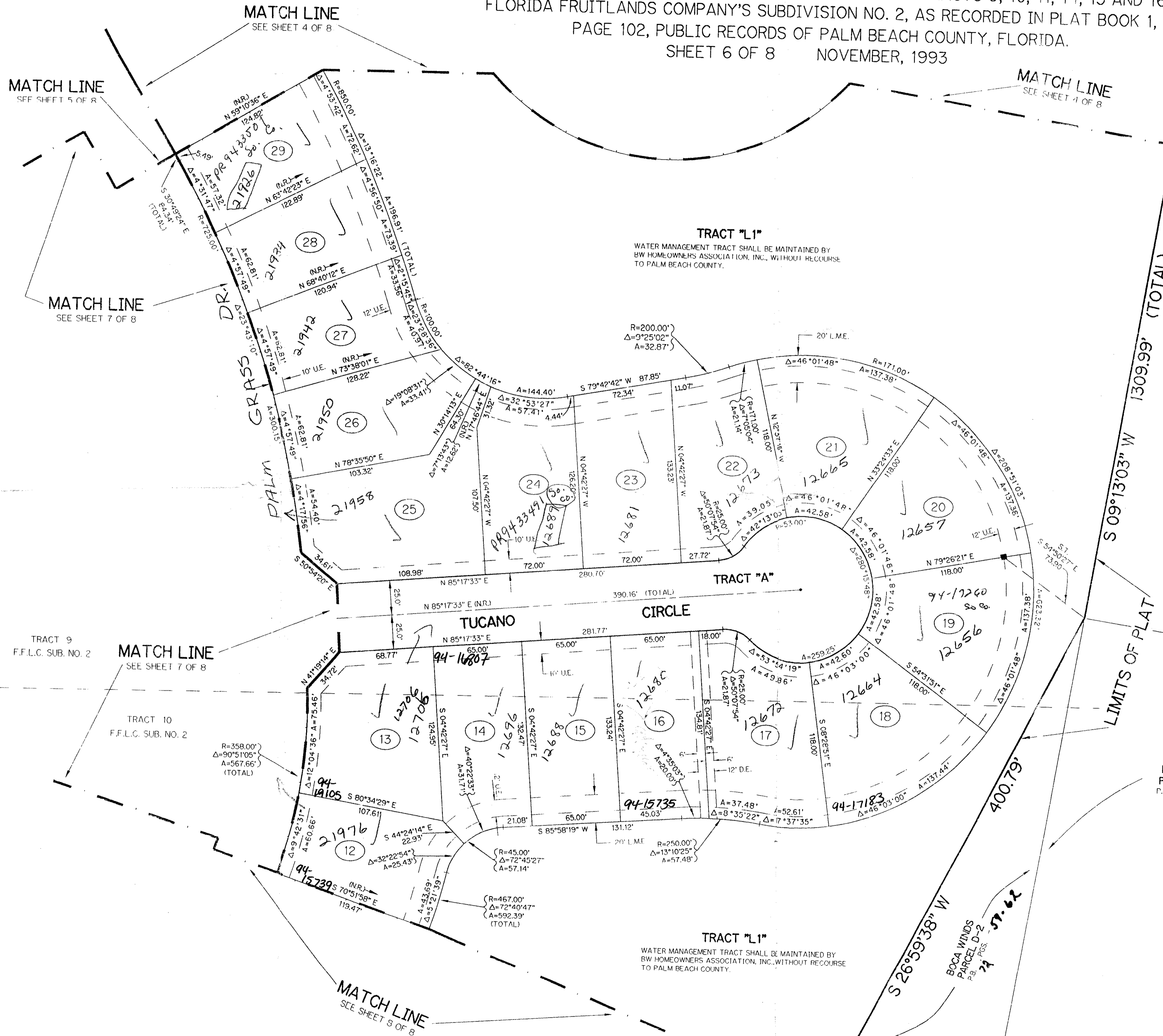
BOCA WINDS - PARCEL E

A PARCEL OF LAND LYING IN SECTION 22 AND 27, TOWNSHIP 47 SOUTH, RANGE 41 EAST, SAID PARCEL ALSO BEING A REPLAT OF A PORTION OF TRACTS 9, 10, 11, 14, 15 AND 16, FLORIDA FRUITLANDS COMPANY'S SUBDIVISION NO. 2, AS RECORDED IN PLAT BOOK 1, PAGE 102, PUBLIC RECORDS OF PALM BEACH COUNTY, FLORIDA.

SHEET 6 OF 8 NOVEMBER, 1993

201-005

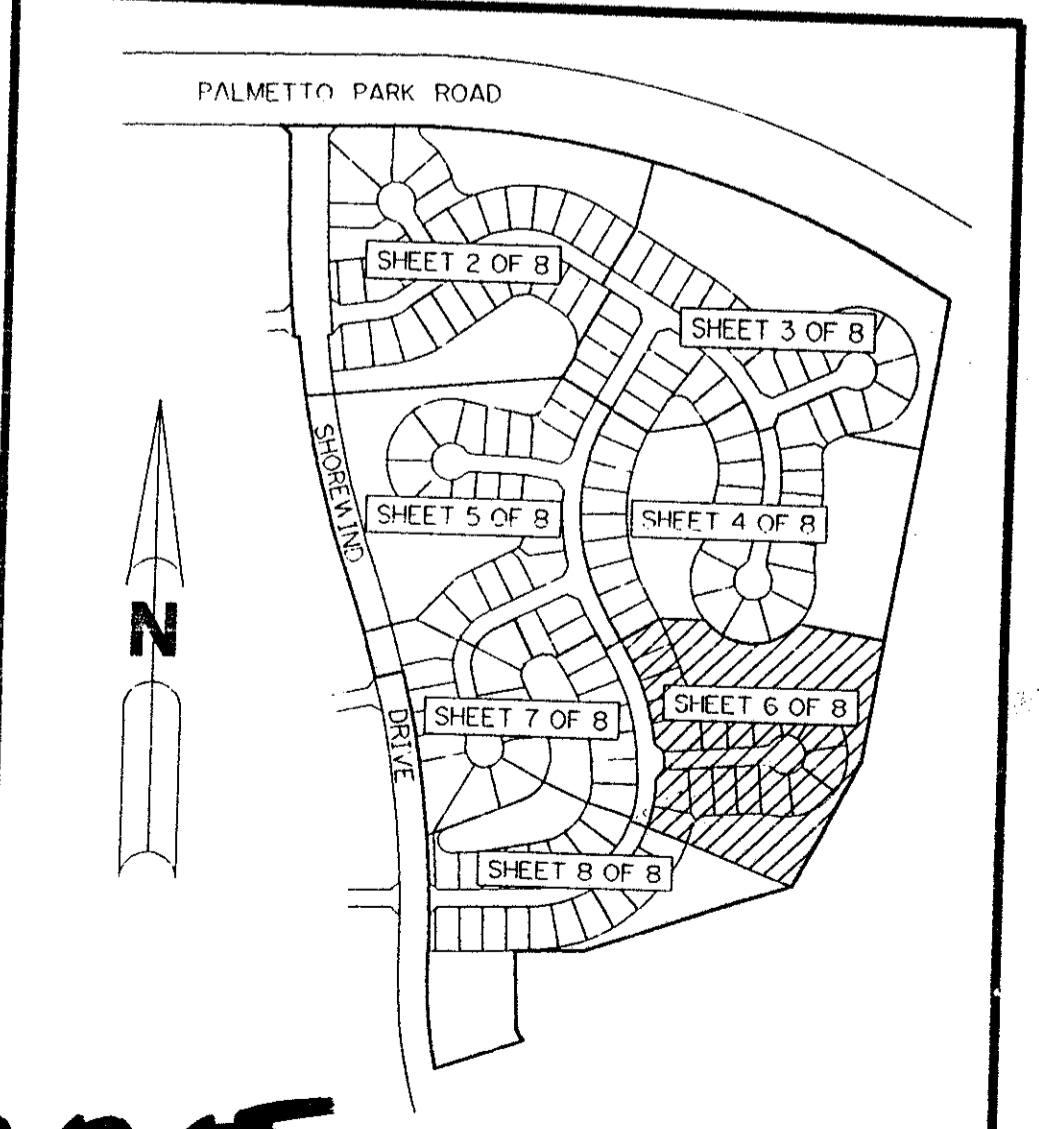
73



*PET. 80-47
ROADS \$1139.02
PER UNIT*

- LEGEND:**
- - PERMANENT REFERENCE MONUMENT, PLS #4213
 - - PERMANENT CONTROL POINT, PLS #4213
 - Δ - DELTA ANGLE
 - A - ARC LENGTH
 - R - RADIUS
 - D.E. - DRAINAGE EASEMENT
 - F.P.E. - FLOOD PLAIN EASEMENT
 - L.A.E. - LIMITED ACCESS EASEMENT
 - L.M.E. - LAKE MAINTENANCE EASEMENT
 - NR. - NOT RADIAL
 - OR. - OFFICIAL RECORD
 - OR.B. - OFFICIAL RECORD BOOK
 - OS. - OPEN SPACE
 - P.B. - PLAT BOOK
 - PGS. - PAGES
 - P.L.S. - PROFESSIONAL LAND SURVEYOR
 - S.T. - SURVEY TIE LINE
 - U.E. - UTILITY EASEMENT
 - L.M.A.E. - LAKE MAINTENANCE ACCESS EASEMENT
 - L.E. - LANDSCAPE EASEMENT
 - F.F.L.C. - FLORIDA FRUITLAND COMPANY'S
 - SUB. NO. 2 - SUBDIVISION NO. 2
 - S.B.T. - SOUTHERN BELL TELEPHONE

THIS INSTRUMENT PREPARED BY
PERRY C. WHITE P.L.S. 4213 STATE OF FLORIDA
LAWSON, NOBLE AND ASSOCIATES, INC.
ENGINEERS PLANNERS SURVEYORS
WEST PALM BEACH, FLORIDA



PARCEL E
BOCA WINDS
SUBDIVISION # BOCA WINDS
PAGE 73
FLOOD ZONE AD-1 FLOOD MAP # COB
QUAD # 69 ZONING RT
SI 80-47 ZIP CODE 33413
TAD NAME BAY WINDS 33433

TAZ 778

0201-005

KEY MAP
N.T.S. 72/73

BOCA WINDS - PARCEL E

SHEET 6 OF 8